



LiFePO4 Revolution



Bianchi Energy Storage Technologies (B.E.S.T.) offers the most advanced LiFePO4 (Lithium Iron Phosphate) battery solutions for golf carts. Our battery solutions deliver superior power, efficiency, and safety compared to traditional lead-acid batteries. Our LiFePO4 batteries provide extended lifespan, rapid charging, longer range, industry-leading battery safety and absolutely **NO MAINTENANCE**.

We start with an onsite personal assessment of your cart which allows us to describe all of the available options that you can choose to fulfill your wishlist. We provide convenient same-day pickup and drop-off services to get you into your new batteries as quickly as possible, and remove all the dirty, old, heavy lead acid batteries and cables from your cart. Additionally, we prioritize environmental sustainability by recycling old lead-acid batteries responsibly. Upgrade to one of B.E.S.T.'s LiFePO4 solutions so you can enjoy the convenient lifestyle that lithium technology provides.

LiFePO4 vs Lead-acid

	LiFePO4	Lead-acid
Greater Driving Range - User Selectable	✓	✗
Faster Charging	✓	✗
Longer Lifespan	✓	✗
Safest Battery Technology	✓	✗
Weight Reduction	✓	✗
NO Maintenance	✓	✗

Why Upgrade?

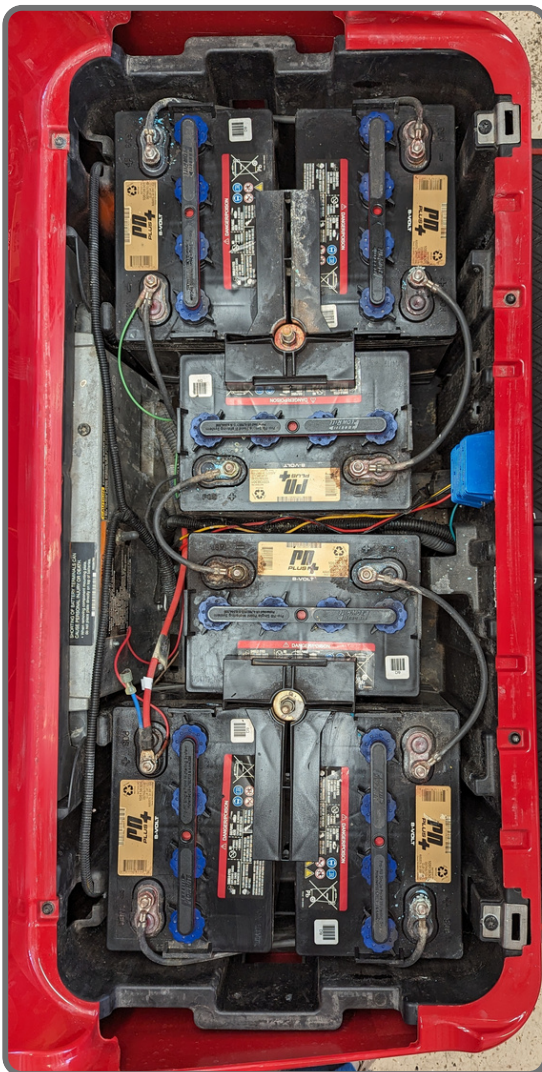
Lead-acid batteries have long been the common form of energy storage used by golf carts. The inconveniences that come with them are apparent:

- Routine watering
- Low maximum range
- Slow charging
- Heavy
- 1-3 year lifespan
- Dangerous acid, harmful outgassing

LiFePO4 solves every single problem that is associated with lead-acid battery ownership, and adds modern technological conveniences:

- Zero maintenance
- High maximum range
- Fast charging
- Up to 75% lighter
- 10 year lifespan
- Safest battery technology
- **Smartphone Capable**

Before



After



B.E.S.T. Upgrade Process




In-person Assessment: At Bianchi Energy Storage Technologies, we offer a streamlined upgrade process for golf carts, enabling a seamless transition from lead-acid batteries to the latest lithium technology. Our upgrade process begins with an in-person assessment, where our knowledgeable technicians come to you to evaluate your golf cart's specific requirements and provide you the optimal lithium solution.

Golf Cart Pickup: With the selection of you desired solution(s), we schedule the pickup of the golf cart from your desired location. Our experienced team carefully handles the transportation of the golf cart to our facility, ensuring its safe arrival. Rest assured, B.E.S.T. is fully insured for all transportation and servicing related actions.

Installation: At our facility, our Power Quality Technicians proceed with the upgrade process by removing the existing lead-acid batteries and replacing them with high-performance LiFePO4 batteries, custom-tailored to the golf cart's specifications. We will also install all pertinent accessories which may include battery meters, voltage reducers, power distribution panels, and new charging receptacle(s).

Performance Validation: After the installation of the new batteries and accessories, our Power Quality Technicians conduct a thorough evaluation and quality checks to ensure that all systems are functioning optimally (including programming and calibration of the battery meter and wireless Bluetooth functionality).

Delivery: Once the upgrade is complete, we arrange for the golf cart's secure delivery back to the customer's desired location. We take the time to walk you through the work that was performed and answer any questions regarding the batteries and new accessories installed.

 **Greener Future:** As part of our commitment to environmental sustainability, we take responsibility for the proper disposal of the old lead-acid batteries. We ensure that these batteries are recycled in an environmentally friendly manner, reducing waste, and promoting a greener future. With our comprehensive upgrade process, golf cart owners can enjoy the enhanced performance and maintenance free longevity of LiFePO4 batteries while contributing to a cleaner, more sustainable energy solution.

B.E.S.T. SERVICES



Others

Live Onsite Golf Cart Assessment	✓	?
Lead-Acid Battery Recycling	✓	?
World-Class LiFePO4 Offerings	✓	?
Custom Electrical Accessory Work	✓	?
Turnkey Solutions, Warranty Support	✓	?
Cart Pickup & Delivery Service	✓	?



Questions: (352) 640-1225

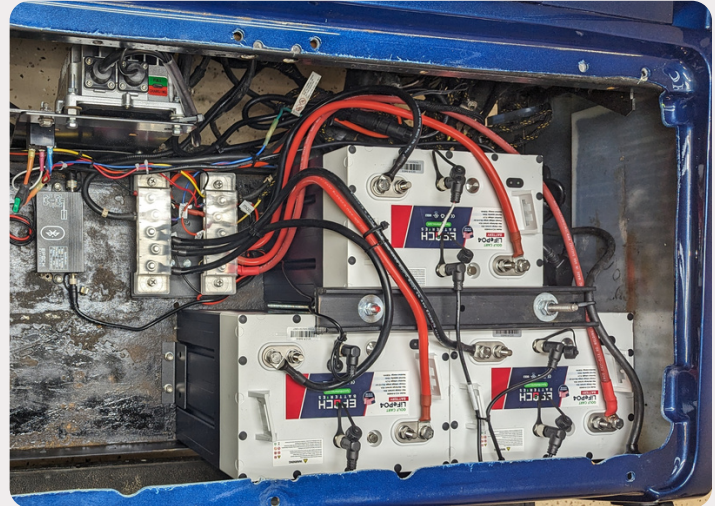


sales@bestgolfbattery.com



<https://bestgolfbattery.com>

Scalable solutions involve multiple batteries, and allow you to scale up your desired driving range. This options provides the flexibility to upgrade your maximum driving range at any point in the future as well. Each battery is connected in parallel via a bus bar, and has a 30 Ah capacity rating at 51.2-volts



Monolithic solutions come in varying single-unit, high capacity sizes, and contain robust monitoring and next generation smartphone application support. With integrated robust Bluetooth monitoring, users can conveniently access real-time battery status and critical information from their smart devices. These come in a variety of sizes, voltages (36v to 72v), and capacities (105Ah to 160Ah).



36-Volt Batteries



105Ah - 4.0kWh

Batteries	Total Ah	kWh	Estimated Range (mi)
1	105	4.0	33 - 38



Above ranges can vary based on terrain, weight, tires, throttle level, and other various factors

What's Included In A Kit?

- 36V to 12V reducer (30 Amps)
- 15A Onboard Charger
- 2AWG Cabling
- Bluetooth Battery Monitor (manufacturer-specific)

Common Cart Compatibility

- EZGO TXT 36V
- Club Car DS

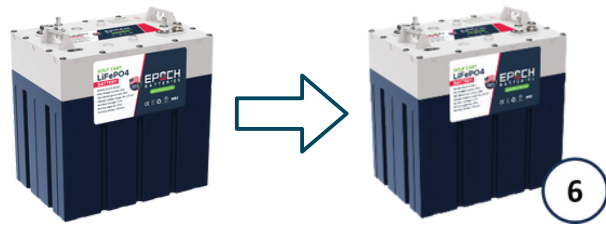
48-Volt Batteries



30Ah/Ea.

Batteries	Total Ah	kWh	Estimated Range (mi)
1	30	1.5	10 - 15
2	60	3.1	22 - 27
3	90	4.6	33 - 38
4	120	6.1	45 - 50
5	150	7.6	57 - 62
6	180	9.2	70 - 75

Max # of batteries = 6. Note: Max # of batteries will be dictated by available space in your cart



105Ah - 5.4kWh

Batteries	Total Ah	kWh	Estimated Range (mi)
1	105	5.4	40 - 45



160Ah - 8.2kWh

Batteries	Total Ah	kWh	Estimated Range (mi)
1	160	8.2	65 - 70



Above ranges can vary based on terrain, weight, tires, throttle level, and other various factors

What's Included In A Kit?

- 48V to 12V reducer (30 Amps)
- 15A to 18A Onboard Charger
- 2AWG Cabling
- Bluetooth Battery Monitor (manufacturer-specific)

Common Cart Compatibility

- EZGO RXV/TXT
- Club Car Precedent/Onward/DS
- Star EV
- MadJax X-Series
- Par Car P4/P5



Questions: (352) 640-1225

sales@bestgolfbattery.com

<https://bestgolfbattery.com>

72-Volt Batteries



105Ah - 7.4kWh

Batteries	Nom. Volt	Total Ah	kWh	Estimated Range (mi)
1	70.4	105	7.4	58 - 63



105Ah - 7.7kWh

Batteries	Nom. Volt	Total Ah	kWh	Estimated Range (mi)
1	73.6	105	7.7	60 - 65



Above ranges can vary based on terrain, weight, tires, throttle level, and other various factors

What's Included In A Kit?

- 72V to 12V reducer (30 Amps)
- 15Amp Onboard Charger
- 2AWG Cabling
- Bluetooth Battery Monitor (manufacturer-specific)

Common Cart Compatibility

- EZGO TXT 72V
- Navitas Systems 72V
- 72-volt converted carts

Battery Kit Pricing



All Kits Include:

- LiFePO4 Battery
- 48v to 12v Reducer
- High Speed, Waterproof Charger
- Dash-Mounted Battery Meter



	<u>Product #</u>	<u>Voltage</u>	<u>Ah</u>	<u>kWh</u>	<u>(Installed) Price</u>	<u>(Hardware-Only) Price</u>
	LP4-5376-48-M-EC	51.2	105	5.4	\$3,550	\$2,950
	LP4-5376-48-M-EC-S	51.2	105	5.4	\$3,550	\$2,950
	LP4-8192-48-M-EC	51.2	160	8.2	\$4,300	\$3,700
	LP4-7392-72-M-EC	70.4	105	7.4	\$4,200	\$3,600
	LP4-4070-36-M-BE	38.4	105	4.0	\$2,900	\$2,300
	LP4-5380-48-M-BE-M	51.2	105	5.4	\$3,600	\$3,000
	LP4-5380-48-M-BE-T	51.2	105	5.4	\$3,600	\$3,000
	LP4-8190-48-M-BE	51.2	160	8.2	\$4,350	\$3,750
	LP4-7730-72-M-BE	73.6	105	7.7	\$4,350	\$3,750
			60	3.1	\$2,550	\$2,050
			90	4.6	\$3,200	\$2,700
	LP4-1536-48-S-EB	51.2	120	6.1	\$3,850	\$3,350
			150	7.6	\$4,400	\$3,900
			180	9.2	\$4,950	\$4,450

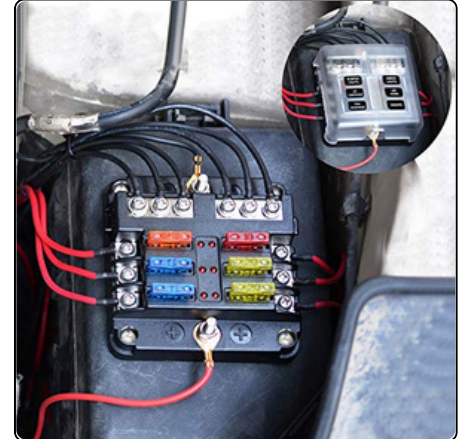
Prices shown before taxes

Prices are subject to change if extraneous circumstances arise during installation

Golf Cart Brands We Service: Club Car, EZGO, Yamaha, Star EV, Par Car, Evolution, MadJax.

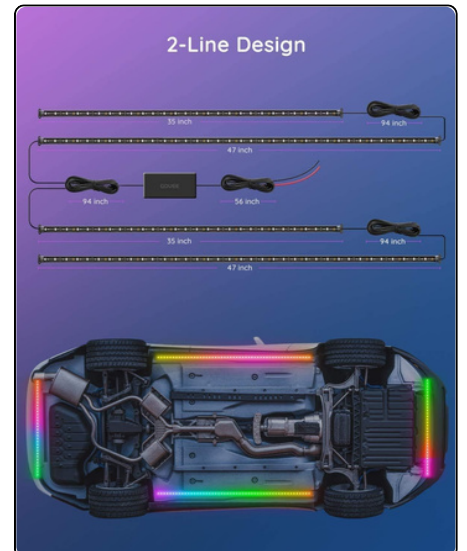
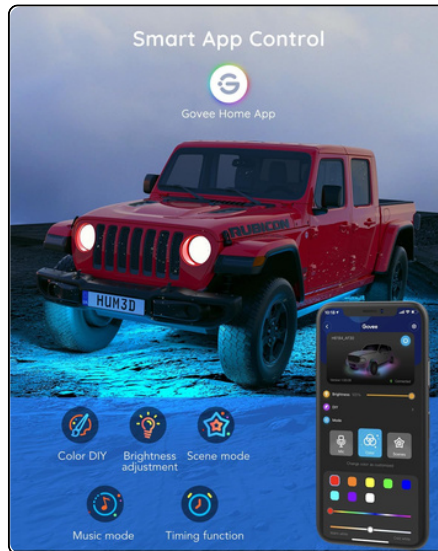
At B.E.S.T., we're continually expanding our service to include more golf cart makes and models. If yours isn't listed, contact us for a complimentary assessment!

Fuse Block



Highly Recommended for carts with multiple 12V circuits

Bluetooth LED Lighting



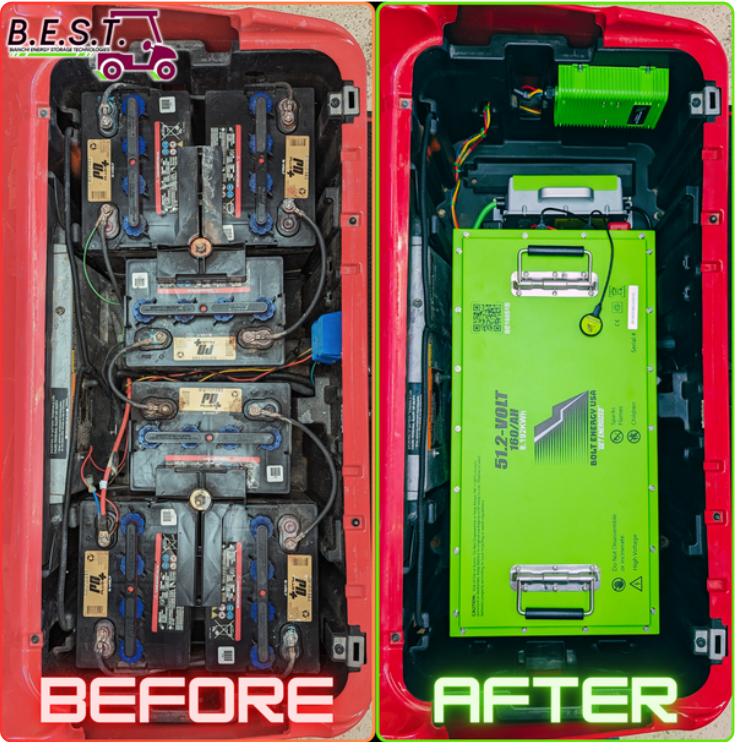
12-Volt Reducer

36V, 48V, 72V

20A & 30A Options



Bolt Energy 160Ah
65 - 70 miles
10 Year Warranty



Club Car Precedent



Bolt Energy 105Ah
40 - 45 miles
10 Year Warranty



EZGO RXV



Additional Information

Warranty

All batteries provided by Bianchi Energy Storage Technologies (B.E.S.T.), to include Bolt Energy systems, Eco Battery, Dakota Lithium, Epoch Batteries, and Allied Lithium are covered by comprehensive, limited manufacturer warranties of 10-years, 8-years, 11-years, 11-years, and 8-years respectively. This warranty ensures that our customers have peace of mind and can rely on the durability and performance of their batteries for an extended period. We stand behind the quality of these products and are committed to providing reliable and long-lasting energy storage solutions.

Warranties are limited to only the original purchaser of the product, and are non-transferable to any other person or entity.

Warranty registration will be conducted by B.E.S.T. upon completion of the installation, with a notice sent to the customer in a timely fashion.

Warranty Exclusions include:

- Damage due to improper installation; loose terminal connections, under-sized cabling, incorrect connections (series and parallel) for desired voltage and AH requirements, or reverse polarity connections
- Environmental damage: inappropriate storage conditions as defined by the Manufacturer; exposure to extreme hot or cold temperatures, fire or freezing, or water damage
- Damage caused by collision
- Damage due to improper maintenance; under- or over-charging the Product, dirty terminal connections
- Product that has been modified or tampered with
- Product that was used for applications other than which it was designed and intended for, including repeated engine starting
- Product that was used on an over-sized inverter/charger without the use of a Manufacturer-approved current surge limiting device
- Product that was under-sized for the application, including an Air Conditioner or similar device having a locked rotor startup up current that is not used in conjunction with a Manufacturer-approved surge-limiting
- Product not stored in adherence to the Manufacturer's storage guidelines, including storage of the Product at low state-of-charge.

